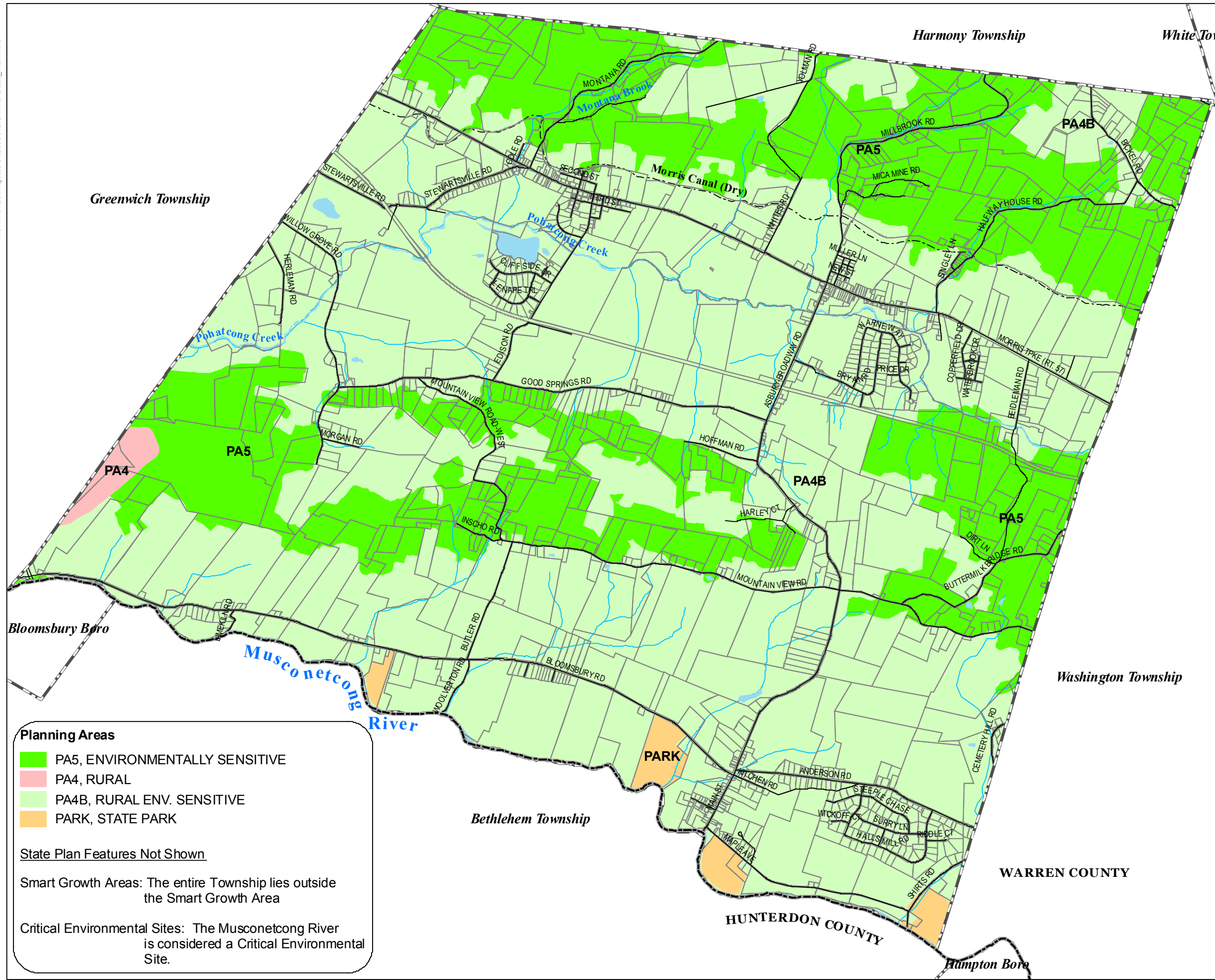


## **17: STATE PLAN AND POLICY MAP**

The New Jersey State Development and Redevelopment Plan, commonly known as the State Plan, is a planning tool promulgated by the State Planning Commission and the Office of Smart Growth. The stated purpose of the plan is to coordinate planning activities and establish statewide planning objectives in the following areas: land use, housing, economic development, transportation, natural resource conservation, agriculture and farmland retention, recreation, urban and suburban redevelopment, historic preservation, public facilities and services, and intergovernmental coordination (N.J.S.A. 52: 18A-200(f)). The plan therefore is designed to provide a comprehensive development projection that balances growth and conservation. Approval of the plan is dependent on the Cross-Acceptance Process, whereby local governments and the community discuss the major aspects of the plan in a public forum, which must locally adopt county-wide plans before submission to the state.

The State Plan therefore is driven by the identification of land areas and designation of future land uses. These designated land areas are known as Planning Areas, which are distinct geographic and economic units based on level of development and important natural resources based on a variety of environmental criteria. Planning Areas are supplemented by Centers, which are targeted for development, and Environs, which are adjacent lands. In addition, the plan may identify other more specific land uses such as Parks and Natural Areas, or those which are more narrowly defined than Planning Areas. Each Planning Area has specific intentions and Policy Objectives that guide the application of Statewide Policies. Additional information is available online (<http://www.nj.gov/dca/osg/plan/>).

Four planning areas encompass portions of Franklin Township ([Figure 16](#)). These are Planning Area 4B (PA4B) Rural Environmentally Sensitive, Planning Area 5 (PA5) Environmentally Sensitive, Parks and Natural Areas (Parks) and Planning Area 4 (PA4) Rural. With nearly 10,425 acres falling within Planning Area 4B (PA4B) Rural Environmentally Sensitive Areas, this area comprises 69% of the Township. Land classified as PA4B contains valuable ecosystems or wildlife habitats and supports agriculture and other related economic development. Any development or redevelopment planned in the PA4B area should respect the natural resources and environmentally sensitive features of this area.



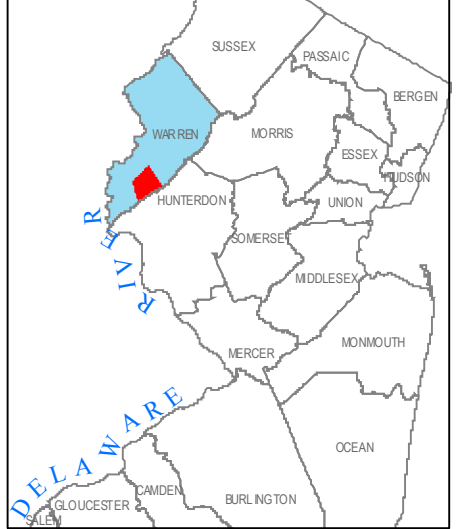
**Planning Areas**

- PA5, ENVIRONMENTALLY SENSITIVE
- PA4, RURAL
- PA4B, RURAL ENV. SENSITIVE
- PARK, STATE PARK

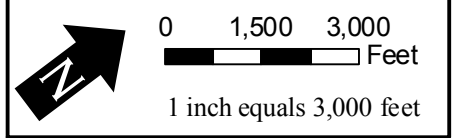
**State Plan Features Not Shown**

Smart Growth Areas: The entire Township lies outside the Smart Growth Area

Critical Environmental Sites: The Musconetcong River is considered a Critical Environmental Site.



PRINCETON HYDRO, LLC.  
1108 OLD YORK ROAD, SUITE 1  
RINGOES, NEW JERSEY, 08551



- SOURCES:**
- Parcel, roads and the Franklin Township Boundary data obtained from Warren County Planning Dept. "This map was developed using the Warren County New Jersey, Geographic Information System digital data, but this secondary product has not been verified by Warren County and is not county-authorized."
  - Surface water data obtained from the NJDEP, Division of GIS.
  - State Plan data obtained from the New Jersey Department of Community Affairs.

**FIGURE 16  
STATE PLAN POLICY**

NATURAL RESOURCE INVENTORY  
FRANKLIN TOWNSHIP  
WARREN COUNTY, NEW JERSEY

**Legend**

- County Boundary
- Municipal Boundaries
- Roads
- Parcels
- Ponds/Lakes
- Streams**
- Streams
- Morris Canal (Dry)

